

Vellore (Madras State) and Bhimashankar (Maharashtra State). These are all new distributional records. Studies on their distribution, bionomics, and potentialities for disease transmission are being separately dealt with.

VIRUS RESEARCH CENTRE¹,

POONA,

January 11, 1965.

T. RAMACHANDRA RAO

REFERENCES

- RAO, T. R. (1955) : *Ixodes kerri*, a new species of tick from a flying squirrel from Southern India (Acarina: Ixodidae). *J. Bombay nat. Hist. Soc.* 52 : 860-864.
- WARBURTON, C. (1933) : On five new species of ticks (Arachnida : Ixodoidea) *Ixodes petauristae*, *I. ampullaceus*, *Demacentor imitans*, *Amblyomma laticaudae* and *Aponomma draconis*, with notes on three previously described species, *Ornithodoros franchinii* Tonelli-Rondelli, *Haemaphysalis cooleyi* Bedford and *Rhipicephalus maculatus* Neumann. *Parasitol.* 24 : 558-568.

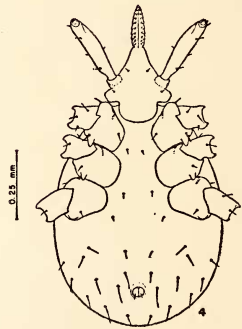
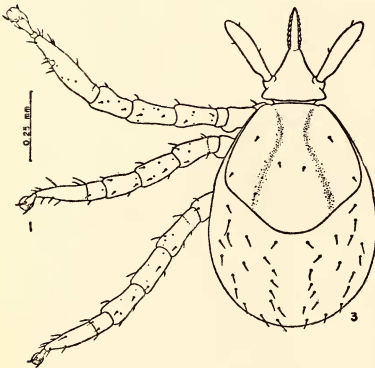
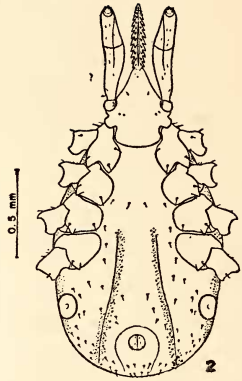
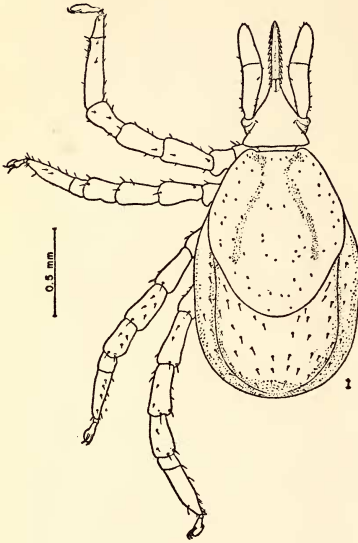
17. DESCRIPTION OF THE NYMPH AND LARVA OF *IXODES PETAURISTAE* WARBURTON, 1933

(With four figures in one plate)

Ixodes petauristae was first described by Warburton (1933) on the basis of a single female collected from a flying squirrel, '*Petaurista philippensis* Link', in Ceylon. Rao (1955) described both the male and the female of *Ixodes kerri* collected from *Petaurista petaurista philippensis* Elliot in south India. This was the first *Ixodes* found in India south of the Himalayas but subsequently large numbers of two species of *Ixodes* have been collected in the forests of Mysore State—*Ixodes kerri*, now regarded as a synonym of *I. petauristae*, and *Ixodes ceylonensis* Kohls.

Adults of *I. petauristae* are common ectoparasites of the Giant Squirrel (*Ratufa indica*) and the Flying Squirrel (*Petaurista petaurista philippensis*) in Mysore State, south India, and immature stages have been commonly found parasitizing small mammals of the forest: shrews, rats, mice, and squirrels. They are occasionally found on monkeys but rarely on birds. The present study is based on material

¹ The Virus Research Centre is jointly maintained by the Indian Council of Medical Research and The Rockefeller Foundation. The Centre also receives a generous grant from the PL 480 Funds from the National Institutes of Health, U.S.A.



Ixodes petauristae Warburton

1. Nymph : dorsal view ; 2. Nymph : ventral view ; 3. Larva : dorsal view ;
4. Larva : ventral view